

NABIS' Service Coordinators are part of the **Alberta Brain Injury Network**, a provincial program of Alberta Seniors & Community Supports, which coordinates supports for individuals affected by brain injury and builds the capacity for such supports within the community. **Program Manager - Rachelle Gietz**

Edmonton, and the region east to west - Sherwood Park to Evansburg and north to south - Redwater to Leduc/Thorsby.

**Rachelle Gietz** rmgabis@telus.net

**Mike Ryan** mike@abihelp.org

**Ivana Srsen** ivana@abihelp.org

**Michael Pyska** *Young Adults*

michael@abihelp.org

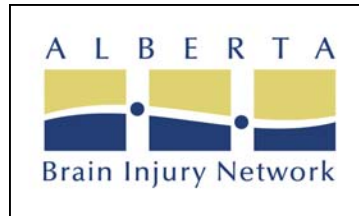
#229, 10106-111 Ave

**Edmonton** T5G 0B4

Phone: (780)479-1757

Fax: 474-4415

Toll Free: 1-800-425-5552



Edmonton West - Edson, Hinton, Jasper, Drayton Valley:

**Tannis Arsenault**

nabis1@telus.net

524 50 St, (Mail Box 20027)

**Edson** T7E 1W4

Phone: (780)712-7560

Fax: (780)712-7567

Toll Free: 1-866-712-7560

## Edson Update

By Tannis Arsenault, Service Coordinator

My name is Tannis Arsenault and I work for the Northern Alberta Brain Injury Society. My job title is Service Coordinator. The Edmonton West office has been running for the past six years funded through the provincially-funded **Alberta Brain Injury Initiative**. I serve Jasper, Hinton, Edson, Entwistle Evansburg, Drayton Valley. My office is located on Main Street Edson AB, which is a central location in my region.

As a Service Coordinator functioning from a rural regional office, I also provide support and information. Since 2007, I have been joined by a part-time co-worker in Service Coordination. There are four support groups running per month. The groups are located in Edson, Hinton, Jasper and Drayton Valley. Please call me at (780)712-7560 for more information about the groups. I also attend local interagency

For the past three years in Edson, NABIS has joined with **Reflections**, a Mental Health-Brain Injury adult drop in centre.

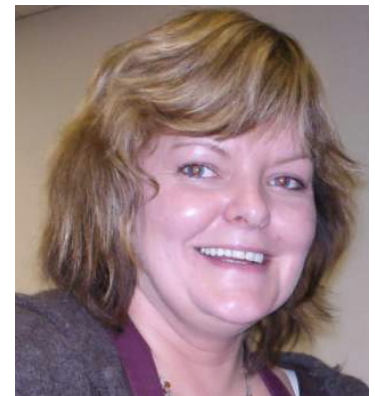


meetings to keep informed of any new contacts for referrals. The position also does involve many hours of travel to reach our survivors and families.

For the past three years in Edson, NABIS has

joined with **Reflections**, a **Mental Health-Brain Injury adult drop in centre**, to partner on events such as Christmas Celebrations and on educational/fundraising occasions. Together we developed a huge educational public event, the **Big Breakfast**, a spin off from the Edmonton office's big classy Brain Injury Awareness Week Kick-off Breakfast held at the Westin Hotel! This year's BIG Breakfast features Michale Borowski, star of the award-winning documentary, *The Dogwalker*.

In addition, to help celebrate NABIS' 25<sup>th</sup> anniversary, NABIS and Reflections are bringing comedian **Camilla Jones** to show her stuff on **Stroke** at the Edson **Big Art Centre** on October 4<sup>th</sup>. Camilla's presentation includes information served up with a lot of fun.



Service Coordinator based in Edson: Tannis Arsenault